



# MODULAR ELECTRONIC SEQUENCING VALVES

## R-982-□

Electronic Piloted Sequence Valve

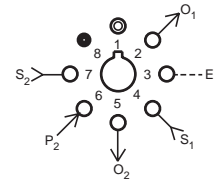
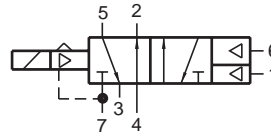


**Features:**

- Extremely low power consumption
- Patented micro gap valving for quick action, no blow by
- Standard octoport plug-in design
- Provides interface between electronics and pneumatics

**Performance:**

**Working Range:** 20 -105 psig;  
**Flow:** 9 scfm @ 100 psig; 255 l/min @ 6.9 bars  
**Pilot Pressure Minimum:** 20 psig; 1.4 bars  
**Temperature:** 32° to 180° F  
**Power Consumption:** 0.65



<b>Voltage</b> .....	R-982-6	6 VDC
	R-982-12	12 VDC
	R-982-24	24 VDC

**Duty:** Continuous duty at 150% of rated voltage

**Description:**

R-982 electronic sequence valve is essentially a hybrid valve consisting of the R-932 valve and the Clippard model ET-3 electronic/pneumatic valve. The ET-3 responds to low current, low voltage signals and pneumatically actuates the R-932 sequence valve to which it is attached.

## R-984-□

Electronic Piloted Sequence Valve

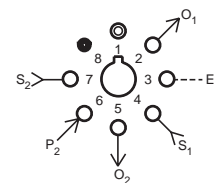
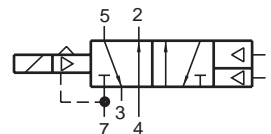


**Features:**

- Extremely low power consumption
- Micro gap construction - snap action and no blow by
- Standard octoport plug-in design
- Provides interface between electronics and pneumatics

**Performance:**

**Working Range:** 20-105 psig; 1.4-7.2 bars  
**Flow:** 9 scfm @ 100 psig; 255 l/min @ 6.9 bars  
**Pilot Pressure Minimum:** 20 psig; 1.4 bars  
**Temperature:** 32° to 180° F  
**Power Consumption:** 0.65



<b>Voltage</b> .....	R-984-6	6 VDC
	R-984-12	12 VDC
	R-984-24	24 VDC

**Duty:** Continuous duty at 150% of rated voltage

**Description:**

The R-984 electronic sequence valve is essentially a hybrid valve consisting of the R-934 valve and the Clippard model ET-3 electronic/pneumatic valve. The ET-3 responds to low current, low voltage signals and pneumatically actuates the R-934 sequence valve to which it is attached.